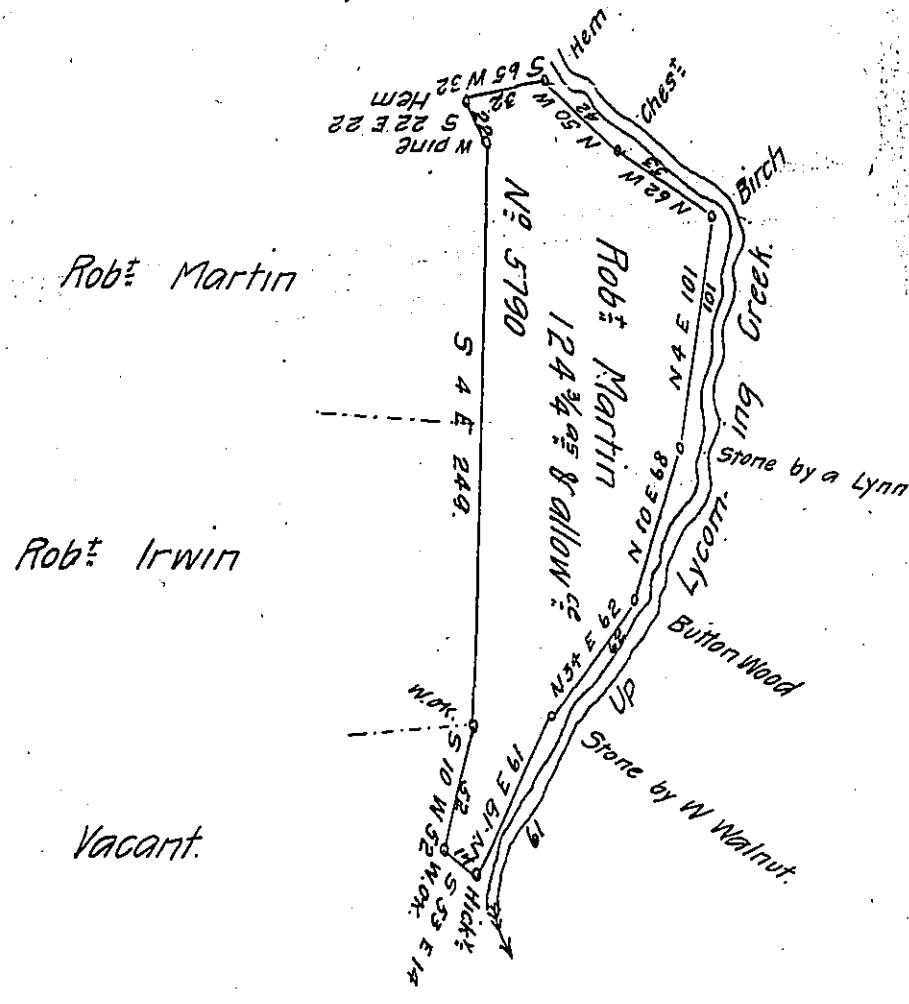


Jo<sup>s</sup> Ryle Ju<sup>s</sup>



Surveyed 9<sup>mo</sup> the 8<sup>th</sup> 1798 for John Reed the above described tract of land, in pursuance of a Warrant granted to Robt Martin Nº 5790 dated March 29<sup>th</sup> 1797; Situate on Lycorn Creek, below and Nearly adjoining Jo<sup>s</sup> Ryle's preemption in the County of Lycorn- ing Containing One hundred and twenty four acres & three quarters and allowance of six Per Cent for Roads &c.

William Ellis D.S

Sam<sup>l</sup> Cochran Esquire S. G.

IN TESTIMONY that the above is a copy of the original remaining on file in the Department of Internal Affairs of Pennsylvania, made conformably to an Act of Assembly approved the 16th day of February, 1833, I have hereunto set my Hand and caused the Seal of said Department to be affixed at Harrisburg, this twenty-fifth day of January 1906

*George D. Brown*  
Secretary of Internal Affairs.